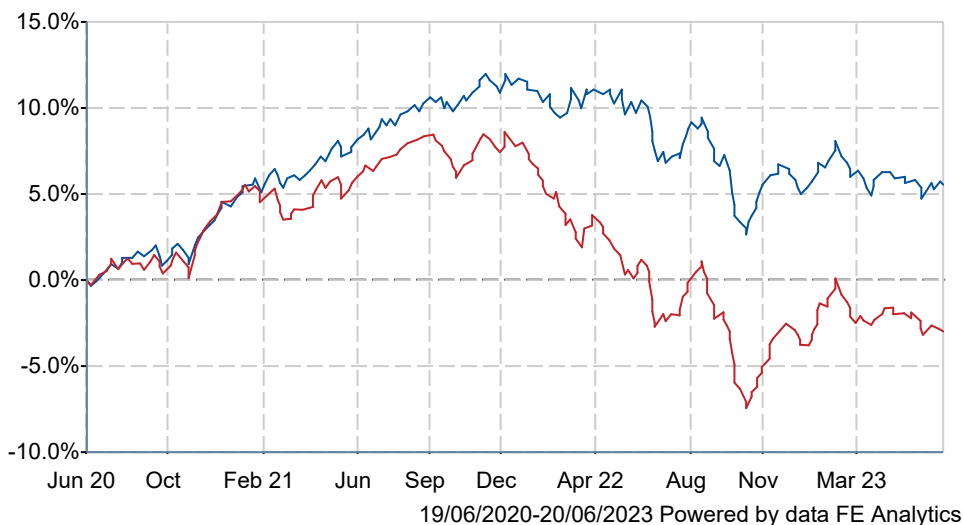




# Royal London GMAP Defensive M Acc

## What is the Fund's objective?

The Fund's investment objective is to achieve capital growth over the course of a market cycle, which should be considered as a period of 6–7 years, by investing at least 80% in other funds, known as collective investment schemes. The Fund aims to achieve a relatively low level of risk and return relative to the other funds in the Royal London Global Multi-Asset Portfolio (GMAP) range. The IA Mixed Investment 0–35% Shares sector and the Fund's custom composite benchmark are considered appropriate benchmarks for performance comparison.

## Cumulative Performance



	3m	6m	1yr	3yrs	5yrs
 Royal London GMAP Defensive M Acc	+0.6	+0.5	-1.3	+5.5	+5.3
 IA Mixed Investment 0-35% Shares	-0.4	+0.8	-0.1	-3.0	+1.2
Rank within sector	11 / 65	42 / 65	50 / 64	1 / 53	17 / 49
Quartile	1	3	4	1	2

Sector	IA Mixed Investment 0-35% Shares
Asset Class	Mixed Asset
Launch Date	14-Mar-2016
Fund Size	£67.7m / \$86.4m (31-May-2023)
Fund Manager	Trevor Greetham

## How does FE fundinfo rate this fund?

FE fundinfo Crown Rating	
AFI	NO
Risk Score	

## Investment Details

Initial Charge	0.00%
Annual Charges	n/a
Note to charges	n/a
Minimum Initial Investment	£ 10,000
Minimum Additional Investment	£ 1,000
Dividend Policy	Jan 02 (Final), Jul 01

## Prices

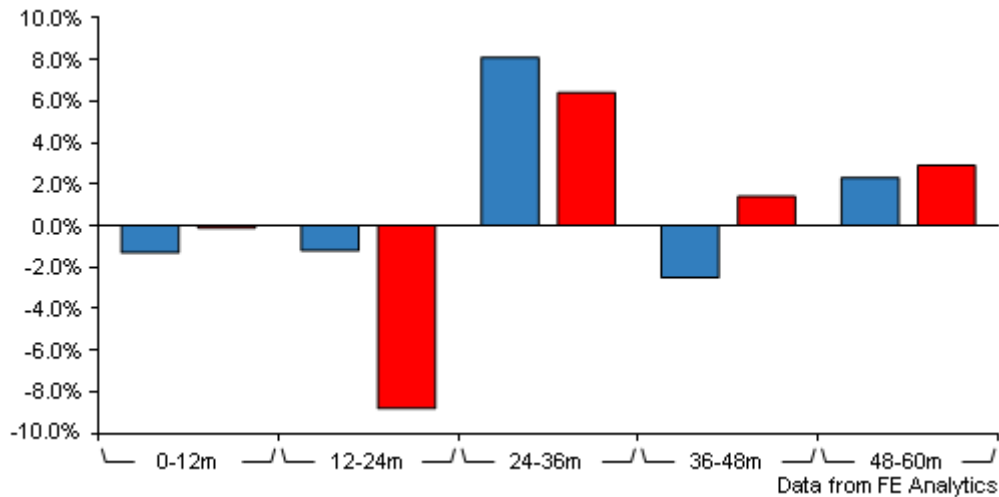
Unit Type	ACC
Mid	116.60(GBX)
Price Date	20 Jun 2023
Yield	2.39

## Codes

Citicode	MZTK
SEDOL	BD8RSJ8
ISIN	GB00BD8RSJ84

# Royal London GMAP Defensive M Acc

## Discrete Performance



	0-12m	12m-24m	24m-36m	36m-48m	48m-60m
<span style="color: blue;">■</span> Royal London GMAP Defensive M Acc	-1.3	-1.2	+8.1	-2.5	+2.3
<span style="color: red;">■</span> IA Mixed Investment 0-35% Shares	-0.1	-8.8	+6.4	+1.4	+2.9
Rank within sector	50 / 64	1 / 61	15 / 53	44 / 49	35 / 49
Quartile	4	1	2	4	3

All prices in Pence Sterling (GBX) unless otherwise specified. Price total return performance figures are calculated on a bid price to bid price basis (mid to mid for OEICs) with net income (dividends) reinvested. Performance figures are shown in Pound Sterling (GBP).

## Contact Details

**Address** 55, Gracechurch Street,  
London, EC3V 0RL

**Telephone numbers** 020 7506 6500 (Main Number)

**Website** [www.rlam.co.uk](http://www.rlam.co.uk)

**Email** [clientrelationships@rlam.co.uk](mailto:clientrelationships@rlam.co.uk)

# Royal London GMAP Defensive M Acc

## Asset Allocation (30 Apr 2023)

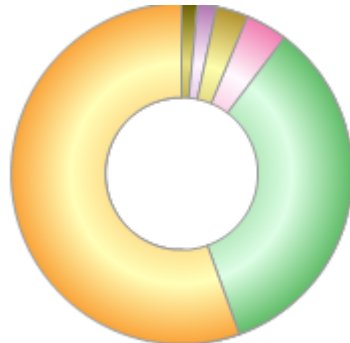
Rank	Asset Classes	%
1	Investment grade corporate bonds	25.10
2	Gilts	20.80
3	Overseas equities	13.00
4	Global high yield bonds (£ hedged)	12.10
5	Index linked gilts	10.00
6	Cash and absolute return	6.80
7	UK equities	5.30
8	UK property	4.20
9	Commodities	2.70



Powered by data from FE fundinfo

## Regional Breakdown (30 Apr 2023)

Rank	Regions	%
1	UK	55.50
2	Other	34.20
3	Europe ex UK	4.00
4	North America	3.00
5	Japan	1.80
6	Asia Pacific ex Japan	1.50



Powered by data from FE fundinfo

## Top Holdings (30 Apr 2023)

Rank	Largest Holdings	%
1	RL Investment Grade Short Dated Credit Fund	11.70
2	RL Short Duration Gilts Fund	9.40
3	RL UK Government Bond Fund	8.80
4	RL Sterling Credit Fund	8.50
5	RL Global High Yield Bond Fund	7.10
6	RL Short Duration Global Index Fund	7.00
7	Government Of United Kingdom 0.75% 22-jul-2023	4.70
8	RL Short Term Money Market Fund	4.20
9	RL Short Duration Global High Yield Bond Fund	4.20
10	RL Property Feeder Fund (PAIF)	3.90