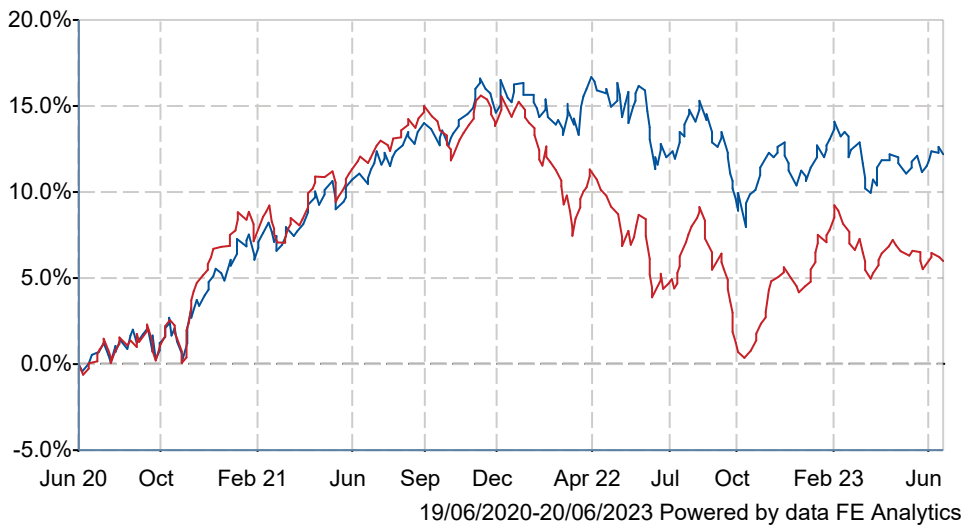


# Royal London GMAP Balanced M Acc

## What is the Fund's objective?

The Fund's investment objective is to achieve capital growth over the course of a market cycle, which should be considered as a period of 6-7 years, by investing at least 80% in other funds, known as collective investment schemes. The Fund aims to achieve a relatively moderate level of risk and return relative to the other funds in the Royal London Global Multi-Asset Portfolio (GMAP) range. The IA Mixed Investment 20-60% Share sector and the Fund's custom composite benchmark are considered appropriate benchmarks for performance comparison.

## Cumulative Performance



	3m	6m	1yr	3yrs	5yrs
Royal London GMAP Balanced M Acc	+2.0	+1.9	+0.8	+12.2	+11.5
IA Mixed Investment 20-60% Shares	+1.0	+2.0	+2.2	+6.0	+8.2
Rank within sector	40 / 178	100 / 178	131 / 175	30 / 155	42 / 140
Quartile	1	3	3	1	2

Sector	IA Mixed Investment 20-60% Shares
Asset Class	Mixed Asset
Launch Date	14-Mar-2016
Fund Size	£445.2m / \$567.8m (31-May-2023)
Fund Manager	Trevor Greetham

## How does FE fundinfo rate this fund?

FE fundinfo Crown Rating	
AFI	NO
Risk Score	<b>37</b>

## Investment Details

Initial Charge	0.00%
Annual Charges	n/a
Note to charges	n/a
Minimum Initial Investment	£ 10,000
Minimum Additional Investment	£ 1,000
Dividend Policy	Jan 02 (Final), Jul 01

## Prices

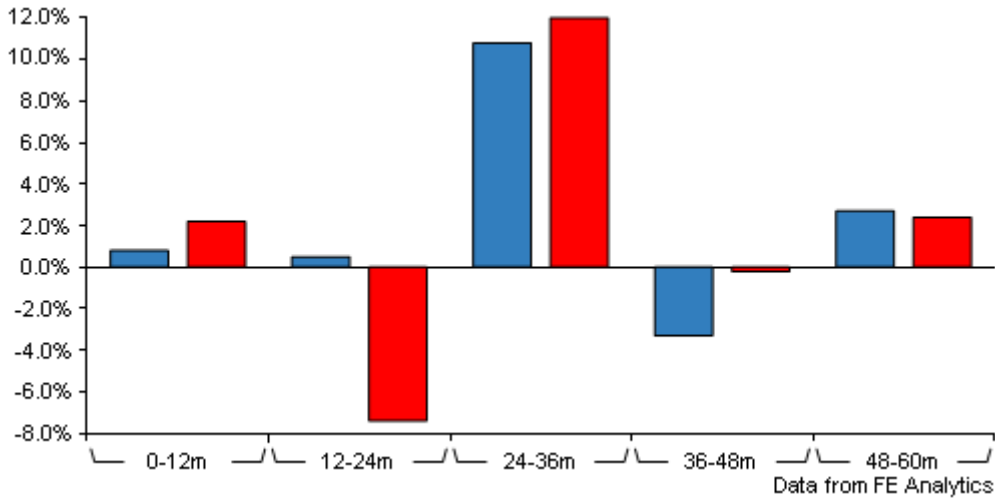
Unit Type	ACC
Mid	130.00(GBX)
Price Date	20 Jun 2023
Yield	2.01

## Codes

Citicode	MZTM
SEDOL	BD8RSQ5
ISIN	GB00BD8RSQ51

# Royal London GMAP Balanced M Acc

## Discrete Performance



	0-12m	12m-24m	24m-36m	36m-48m	48m-60m
<span style="color: blue;">■</span> Royal London GMAP Balanced M Acc	+0.8	+0.5	+10.8	-3.3	+2.7
<span style="color: red;">■</span> IA Mixed Investment 20-60% Shares	+2.2	-7.4	+12.0	-0.2	+2.4
Rank within sector	131 / 175	6 / 168	106 / 155	114 / 148	61 / 140
Quartile	3	1	3	4	2

All prices in Pence Sterling (GBX) unless otherwise specified. Price total return performance figures are calculated on a bid price to bid price basis (mid to mid for OEICs) with net income (dividends) reinvested. Performance figures are shown in Pound Sterling (GBP).

## Contact Details

**Address** 55, Gracechurch Street,  
London, EC3V 0RL

**Telephone numbers** 020 7506 6500 (Main Number)

**Website** [www.rlam.co.uk](http://www.rlam.co.uk)

**Email** [clientrelationships@rlam.co.uk](mailto:clientrelationships@rlam.co.uk)

# Royal London GMAP Balanced M Acc

## Asset Allocation (30 Apr 2023)

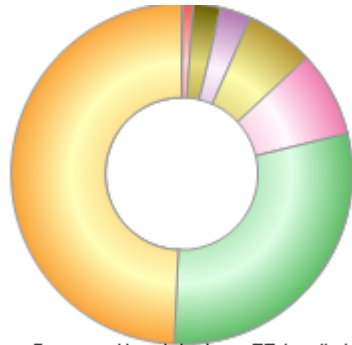
Rank	Asset Classes	%
1	Overseas equities	26.60
2	Investment grade corporate bonds	18.60
3	UK equities	11.50
4	Gilts	11.40
5	Global high yield bonds (£ hedged)	9.30
6	Index linked gilts	7.20
7	UK property	6.60
8	Cash and absolute return	6.20
9	Commodities	1.60
10	Emerging Market equities	1.00



Powered by data from FE fundinfo

## Regional Breakdown (30 Apr 2023)

Rank	Regions	%
1	UK	49.30
2	Other	29.50
3	North America	8.10
4	Europe ex UK	6.50
5	Japan	2.90
6	Asia Pacific ex Japan	2.60
7	Emerging Market	1.00
8	US Sector	0.10



Powered by data from FE fundinfo

## Top Holdings (30 Apr 2023)

Rank	Largest Holdings	%
1	RL Investment Grade Short Dated Credit Fund	8.90
2	RL UK Broad Equity Tilt Fund	8.00
3	RL Property Feeder Fund (PAIF)	5.90
4	RL UK Government Bond Fund	5.90
5	RL Sterling Credit Fund	5.70
6	RL Short Duration Global Index Fund	4.50
7	RL Short Duration Gilts Fund	4.40
8	RL Global High Yield Bond Fund	4.40
9	Government Of United Kingdom 0.75% 22-jul-2023	4.30
10	RL Short Duration Global High Yield Bond Fund	4.00