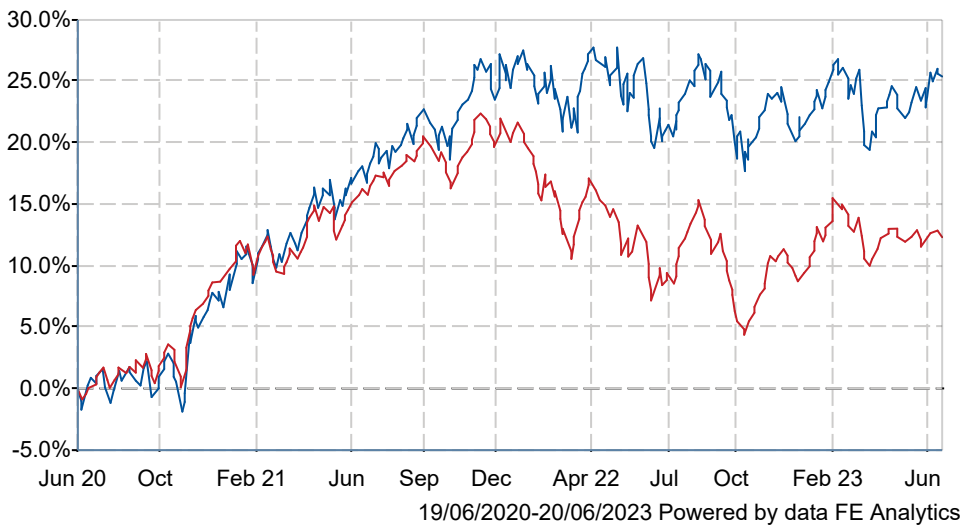




# Royal London GMAP Adventurous M Acc

## What is the Fund's objective?

The Fund's investment objective is to achieve capital growth over the course of a market cycle, which should be considered as a period of 6-7 years, by investing at least 80% in other funds, known as collective investment schemes. The Fund aims to achieve a relatively high level of risk and return relative to the other funds in the Royal London Global Multi-Asset Portfolio (GMAP) range. The IA Mixed Investment 40-85% Shares sector and the Fund's custom composite benchmark are considered appropriate benchmarks for performance comparison.

## Cumulative Performance



	3m	6m	1yr	3yrs	5yrs
 Royal London GMAP Adventurous M Acc	+5.0	+4.7	+4.9	+25.4	+21.8
 IA Mixed Investment 40-85% Shares	+2.1	+3.6	+5.0	+12.3	+15.8
Rank within sector	6 / 217	61 / 217	127 / 216	12 / 188	47 / 168
Quartile	1	2	3	1	2

Sector	IA Mixed Investment 40-85% Shares
Asset Class	Mixed Asset
Launch Date	14-Mar-2016
Fund Size	£383.8m / \$489.6m (31-May-2023)
Fund Manager	Trevor Greetham

## How does FE fundinfo rate this fund?

FE fundinfo Crown Rating	
AFI	NO
Risk Score	

## Investment Details

Initial Charge	0.00%
Annual Charges	n/a
Note to charges	n/a
Minimum Initial Investment	£ 10,000
Minimum Additional Investment	£ 1,000
Dividend Policy	Jan 02 (Final), Jul 01

## Prices

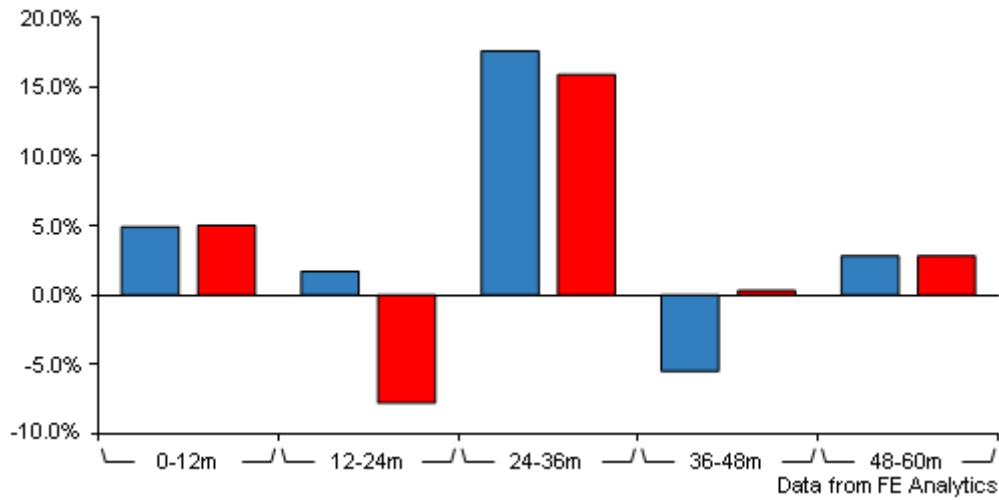
Unit Type	ACC
Mid	159.70(GBX)
Price Date	20 Jun 2023
Yield	1.57

## Codes

Citicode	MZTQ
SEDOL	BD8RSG5
ISIN	GB00BD8RSG53

# Royal London GMAP Adventurous M Acc

## Discrete Performance



	0-12m	12m-24m	24m-36m	36m-48m	48m-60m
Royal London GMAP Adventurous M Acc	+4.9	+1.7	+17.6	-5.5	+2.8
IA Mixed Investment 40-85% Shares	+5.0	-7.8	+15.9	+0.3	+2.8
Rank within sector	127 / 216	5 / 207	66 / 188	162 / 176	82 / 168
Quartile	3	1	2	4	2

All prices in Pence Sterling (GBX) unless otherwise specified. Price total return performance figures are calculated on a bid price to bid price basis (mid to mid for OEICs) with net income (dividends) reinvested. Performance figures are shown in Pound Sterling (GBP).

## Contact Details

Address 55, Gracechurch Street,  
London, EC3V 0RL

Telephone numbers 020 7506 6500 (Main Number)

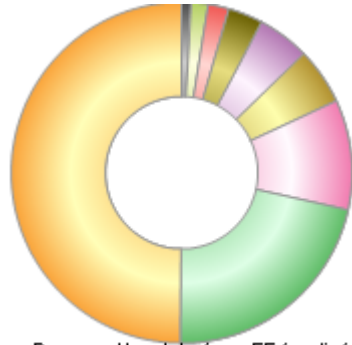
Website [www.rlam.co.uk](http://www.rlam.co.uk)

Email [clientrelationships@rlam.co.uk](mailto:clientrelationships@rlam.co.uk)

# Royal London GMAP Adventurous M Acc

## Asset Allocation (30 Apr 2023)

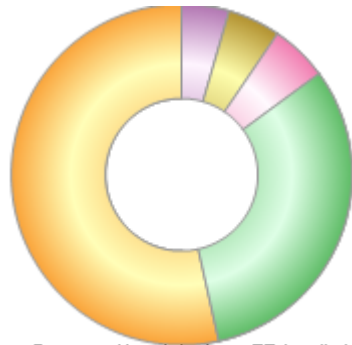
Rank	Asset Classes	%
1	Overseas equities	50.20
2	UK equities	21.80
3	UK property	10.50
4	Cash and absolute return	5.40
5	Emerging Market equities	5.00
6	Global high yield bonds (£ hedged)	3.30
7	Investment grade corporate bonds	2.00
8	Commodities	1.60
9	Index linked gilts	0.90
10	Gilts	-0.70



Powered by data from FE fundinfo

## Regional Breakdown (30 Apr 2023)

Rank	Regions	%
1	Overseas equities	53.50
2	UK property	31.60
3	Cash and absolute return	5.40
4	Emerging Market equities	5.00
5	Investment grade corporate bonds	4.50



Powered by data from FE fundinfo

## Top Holdings (30 Apr 2023)

Rank	Largest Holdings	%
1	RL UK Broad Equity Tilt Fund	16.70
2	RL US Equity Tilt Fund	10.20
3	RL Property Feeder Fund (PAIF)	9.20
4	RL Emerging Markets Equity Tracker Fund	6.20
5	RL Global Equity Diversified Fund	6.10
6	RL Global Equity Enhanced Fund	5.90
7	RL Short Term Money Market Fund	5.30
8	Government Of United Kingdom 0.75% 22-jul-2023	4.30
9	RL Europe Ex UK Equity Tilt Fund	3.90
10	RL Global High Yield Bond Fund	2.10