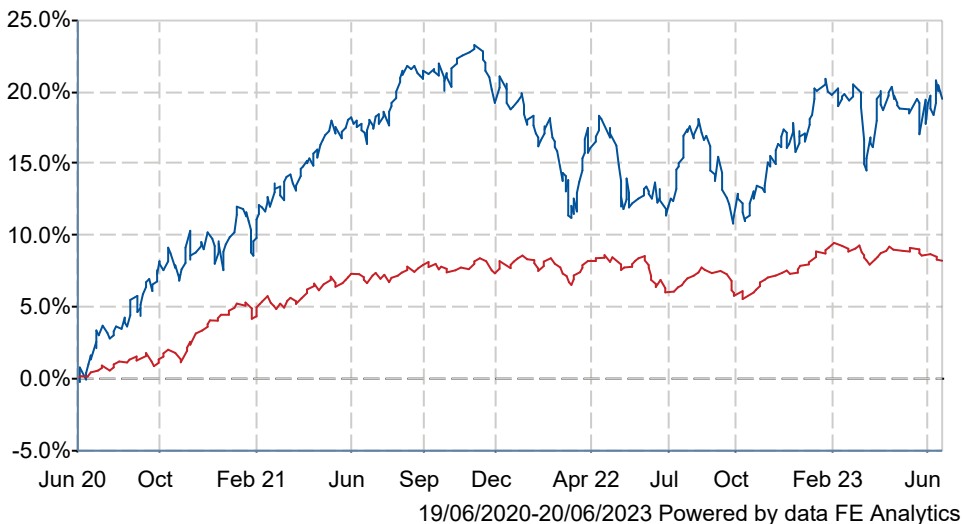




## Janus Henderson European Absolute Return I Acc

### What is the Fund's objective?

The Fund aims to achieve a positive absolute return in excess of the UK base interest rate, after charges (but before the deduction of any performance fees) over the long-term (rolling 3 year periods) regardless of market conditions. The Fund aims to provide an absolute (more than zero) return, typically over a 12-month period. An absolute return performance is not guaranteed over this specific, or any other, time period and particularly over the short term the Fund may experience periods of negative returns. Consequently your capital is in fact at risk. The Fund invests primarily in shares or derivatives of shares of companies with their registered office in or which do most of their business (directly or through subsidiaries) in Europe (including UK). The Fund takes long positions on shares it believes are promising (meaning that the Fund will gain to the extent these share prices may rise) and takes short positions in shares it believes are likely to decline in price (meaning the Fund will gain to the extent these share prices fall). At any time, all or a substantial proportion of the assets may consist of cash and near cash securities. The Fund makes extensive use of investment techniques, particularly those that involve derivatives, to obtain both its long and short investment exposure.


### Cumulative Performance



|  | 3m   | 6m   | 1yr  | 3yrs  | 5yrs  |
|--|------|------|------|-------|-------|
|  Janus Henderson European Absolute Return I Acc | +4.1 | +3.6 | +6.7 | +20.1 | +23.4 |
|  IA Targeted Absolute Return                    | +0.2 | +0.7 | +1.3 | +8.2  | +8.0  |

|              |                                      |
|--------------|--------------------------------------|
| Sector       | IA Targeted Absolute Return          |
| Asset Class  | Equity                               |
| Launch Date  | 26-Jan-2009                          |
| Fund Size    | £31.3m / \$40.0m (20-Jun-2023)       |
| Fund Manager | John Bennett<br>Robert Schramm-Fuchs |

### How does FE fundinfo rate this fund?

|                          |   |
|--------------------------|---|
| Alpha Manager Rating     | John Bennett  |
| FE fundinfo Crown Rating |  |
| AFI                      | NO  |
| Risk Score               | <b>59</b>   |

### Investment Details

|                               |                        |
|-------------------------------|------------------------|
| Initial Charge                | 5.00%                  |
| Annual Charges                | 0.75%                  |
| Note to charges               | n/a                    |
| Minimum Initial Investment    | £ 3,000,000            |
| Minimum Additional Investment | £ 10,000               |
| Dividend Policy               | Jun 01 (Final), Dec 01 |

### Prices

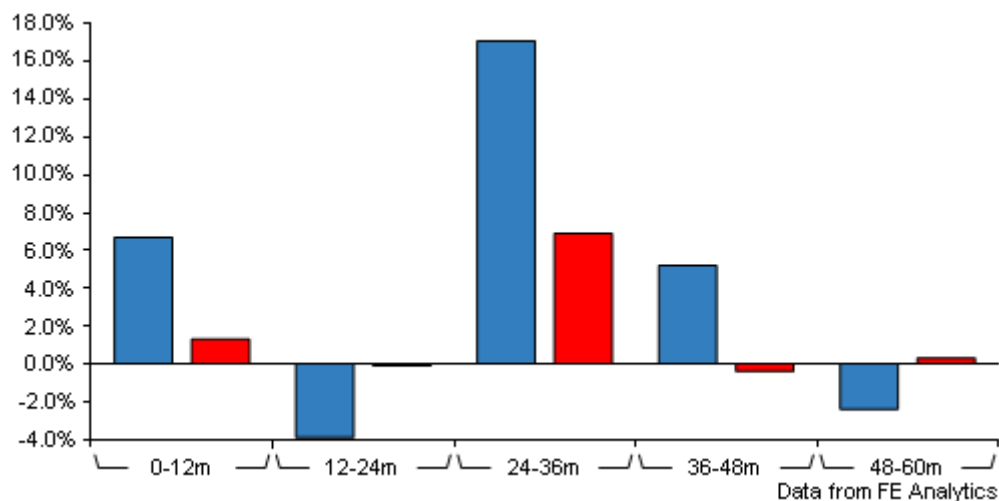
|            |             |
|------------|-------------|
| Unit Type  | ACC         |
| Mid        | 213.30(GBX) |
| Price Date | 20 Jun 2023 |
| Yield      | 1.30        |

### Codes

|          |              |
|----------|--------------|
| Citicode | DD03         |
| SEDOL    | B3CPX37      |
| ISIN     | GB00B3CPX375 |

# Janus Henderson European Absolute Return I Acc

## Discrete Performance



|  | 0-12m | 12m-24m | 24m-36m | 36m-48m | 48m-60m |
|--|-------|---------|---------|---------|---------|
| Janus Henderson European Absolute Return I Acc | +6.7  | -3.9    | +17.1   | +5.2    | -2.4    |
| IA Targeted Absolute Return                    | +1.3  | -0.1    | +6.9    | -0.4    | +0.3    |

All prices in Pence Sterling (GBX) unless otherwise specified. Price total return performance figures are calculated on a bid price to bid price basis (mid to mid for OEICs) with net income (dividends) reinvested. Performance figures are shown in Pound Sterling (GBP).

## Contact Details

**Address** 201 Bishopsgate, London, United Kingdom, EC2M 3AE

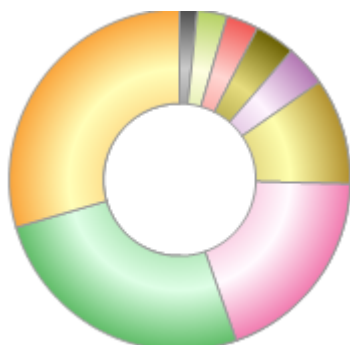
**Telephone numbers** 44 (0)20 7818 1819 (Fax Number)  
44 (0)20 7818 1818 (Main Number)

**Website** [www.janushenderson.com](http://www.janushenderson.com)

# Janus Henderson European Absolute Return I Acc

## Asset Allocation (30 Apr 2023)

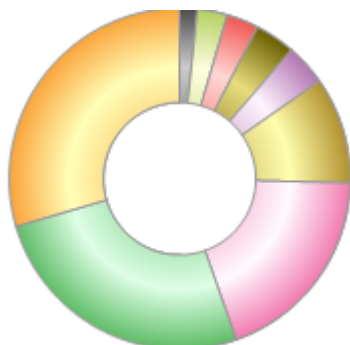
| Rank | Asset Classes    | %     |
|------|------------------|-------|
| 1    | UK Equities      | 30.11 |
| 2    | Money Market     | 26.37 |
| 3    | French Equities  | 19.64 |
| 4    | Swiss Equities   | 10.27 |
| 5    | Finnish Equities | 4.00  |
| 6    | Swedish Equities | 3.94  |
| 7    | US Equities      | 3.10  |
| 8    | German Equities  | 2.85  |
| 9    | Belgian Equities | 1.66  |
| 10   | Others           | -1.94 |



Powered by data from FE fundinfo

## Regional Breakdown (30 Apr 2023)

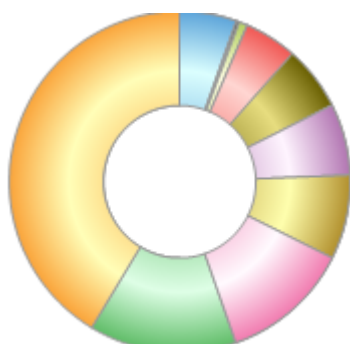
| Rank | Regions        | %     |
|------|----------------|-------|
| 1    | United Kingdom | 30.11 |
| 2    | Cash           | 26.37 |
| 3    | France         | 19.64 |
| 4    | Switzerland    | 10.27 |
| 5    | Finland        | 4.00  |
| 6    | Sweden         | 3.94  |
| 7    | United States  | 3.10  |
| 8    | Germany        | 2.85  |
| 9    | Belgium        | 1.66  |
| 10   | Others         | -1.94 |



Powered by data from FE fundinfo

## Sector Breakdown (30 Apr 2023)

| Rank | Sectors                | %     |
|------|------------------------|-------|
| 1    | Cash                   | 41.44 |
| 2    | Materials              | 14.03 |
| 3    | Consumer Staples       | 12.25 |
| 4    | Financials             | 7.98  |
| 5    | Industrials            | 6.76  |
| 6    | Energy                 | 6.07  |
| 7    | Consumer Discretionary | 4.97  |
| 8    | Communication Services | 0.81  |
| 9    | Health Care            | 0.26  |
| 10   | Others                 | 5.43  |



Powered by data from FE fundinfo

## Top Holdings (30 Apr 2023)

| Rank | Largest Holdings                  | %     |
|------|-----------------------------------|-------|
| 1    | United Kingdom Treasury Bill 2023 | 15.07 |
| 2    | BNP Paribas Issuance              | 9.67  |

## Janus Henderson European Absolute Return I Acc

| Rank | Largest Holdings        | %    |
|------|-------------------------|------|
| 3    | Euro Stoxx 50 Price EUR | 5.93 |
| 4    | Danone                  | 3.77 |
| 5    | Unilever                | 3.77 |
| 6    | Nestlé                  | 3.57 |
| 7    | TotalEnergies           | 3.54 |
| 8    | Shell                   | 3.54 |
| 9    | RWE                     | 3.25 |
| 10   | Linde                   | 3.10 |